



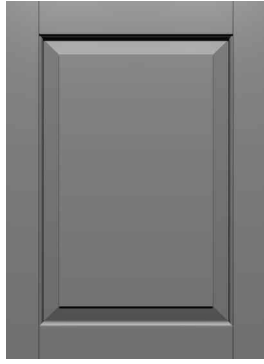
## Program Door and Drawer Front Specifications

The following specifications are for CRP-10, CRP-20, CRP-30 and TW-10 program doors, and 3/4" thick slab and 1" thick #10 program drawer fronts. These designs receive modified material pricing as a benefit to customers who order complete Cabinet Systems. As an added benefit, program door and drawer front designs ordered with Cabinet Systems also receive improved lead-times. For additional information on material specifications, lead-times and pricing for these designs, refer to the appropriate tabs in this manual.

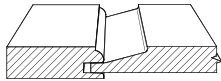
- CRP-10, CRP-20, and CRP-30 doors and both drawer front designs are available in five wood species: Red Oak, Soft Maple, Hard Maple, Hickory, and Cherry.
- TW-10 doors have a 1/4" veneer panel. Available in Red Oak, Cherry, Hickory or Hard Maple only. (Red Oak and Cherry have a standard grade panel with value grade framing).
- 3/4" slant raise is standard on all doors except TW-10.
- Regular bead is standard on all program doors.
- Eight edge profiles available: C-2, E-2, ME, LC-2, PRS-2, FP, B-2 and C. PRS-2, LC-2, B-2 and ME can accept concealed hinge boring.
- Cabinet Systems program doors and drawer fronts purchased separately from Cabinet Systems must be ordered and priced like custom. These designs will be subject to custom lead-times.
- 1/4", 1/2", 1-1/4" and 1-3/8" overlays available in all species.
- When 1-3/8" overlay is ordered, extended stiles or loose filler strips may be required in applications where cabinets are installed next to a wall or tall cabinets. The necessity for extended stiles or loose filler strips is determined by the type of hinge used. Corner cabinets may require special hinging.
- Two panel doors have the option of different styles on the same door. If not specified, both panels will match the base cabinet doors, except on tall cabinets where the top door is a two panel door. In these instances, the top panel will match the designs on wall cabinets.
- Available options for Cabinet Systems program doors include finishing, cross grain removal sanding, dovetail rout for drawer fronts (not available in 1-1/4" and 1-3/8" overlays) and drilling for concealed hinges. Refer to the Custom Product Manual for pricing and specification details.
- CRP-20 and CRP-30 doors can be cut-down to 6-1/2" wide, but cannot be drilled for concealed hinges. Such cut-downs may also affect the installation of other hinges.
- All butt door cabinet doors receive an edge profile on all four sides and have a 1/8" gap between doors. Butt doors with a C edge profile are paired and lipped on three sides with a C-2 profile on the fourth side.
- See diagram in this section for overlay reveal specifications.



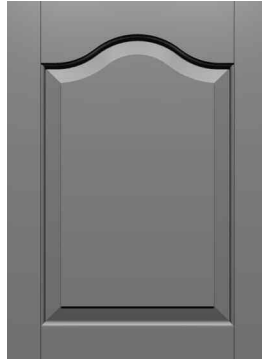
## Program Door Designs



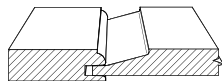
**CRP-10**



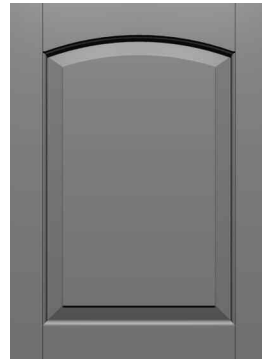
\$11.25-B  
7-1/2" x 7-1/2"  
Slant raise standard



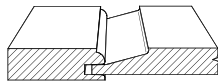
**CRP-20**



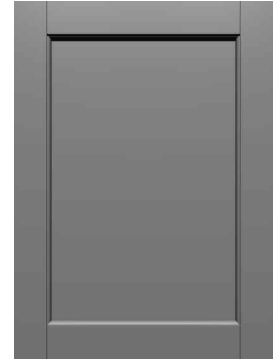
\$16.25-B  
8-1/4" x 9-1/4"  
Slant raise standard



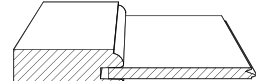
**CRP-30**



\$16.25-B  
8-1/4" x 8-1/2"  
Slant raise standard



**TW-10**

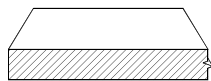


\$9.40-A  
6" x 5"  
1/4" Veneered Panel

## Program Drawer Front Designs



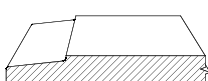
**Slab**



\$4.55-B  
1-1/2" x 2-1/2"  
3/4" or 1"



**#10**

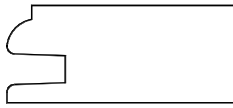


\$4.80-B  
3" x 3"  
To match slant raise  
3/4" or 1" slab

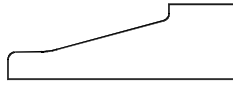
Unless specified otherwise, framing width on all designs is 2-5/16" measured across the back of the framing. Profile cross section for reference only. Minimums listed are based on raise shown. Minimums will vary depending on the overlay and cabinet width selection.



## Program Bead & Raise Profiles

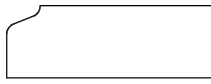


**Regular Bead**

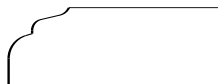


**Slant Raise**

## Program Edge Profile Options



**C-2**



**E-2**



**Machine Edge\***



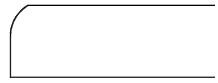
**LC-2\***



**PRS-2\***



**FP**  
3/4" thick only



**B-2\***



**C**  
3/4" thick only  
Rabbit: 7/16" deep  
3/8" high

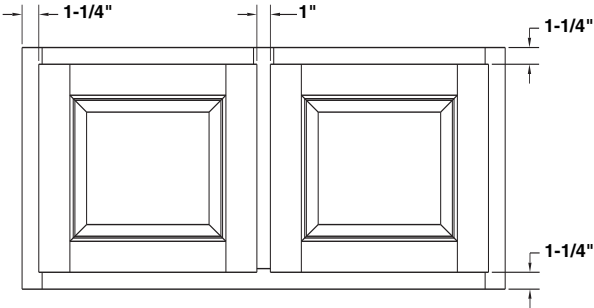
\*Drilling for concealed hinges is available on doors with these profiles.



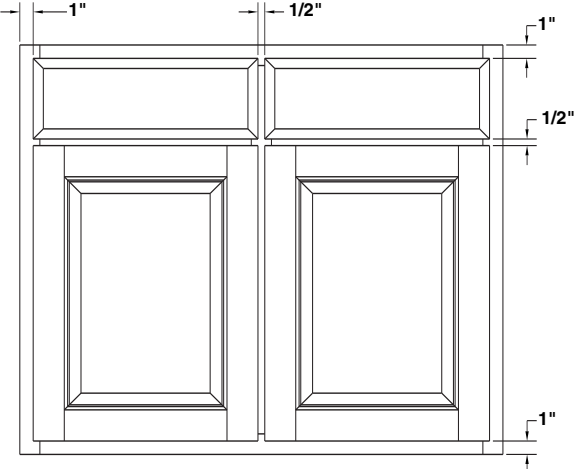
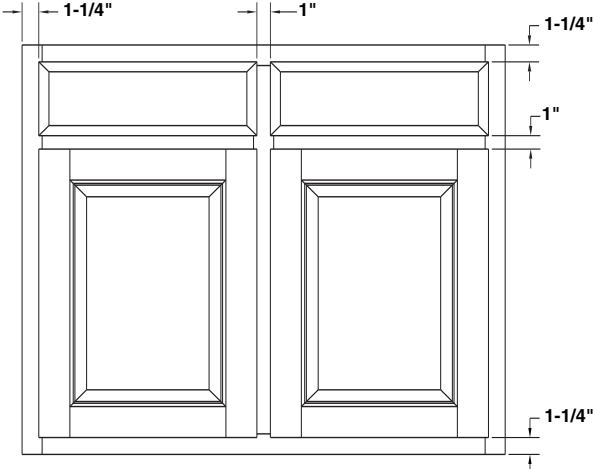
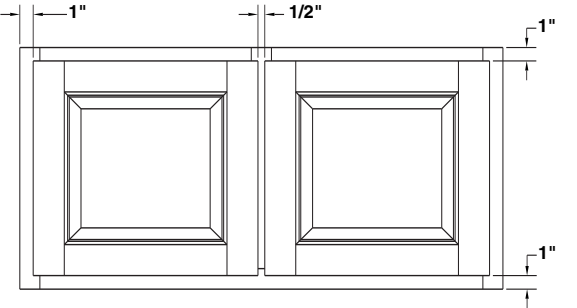
# Overlay Diagrams

WOOD DOORS & DRAWER FRONTS  
Cabinet Systems

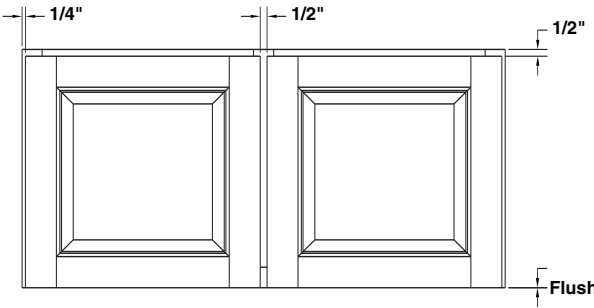
### 1/4" Overlay



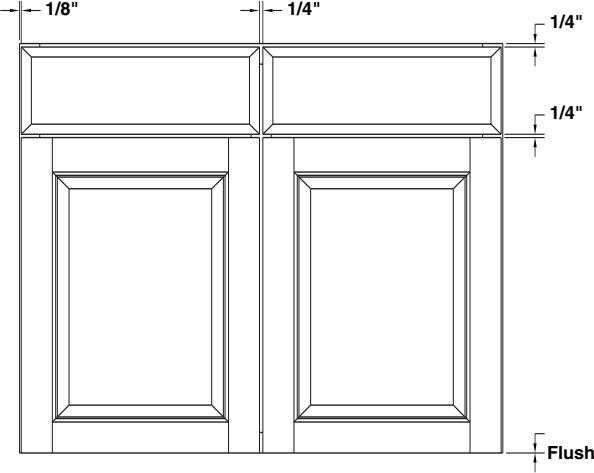
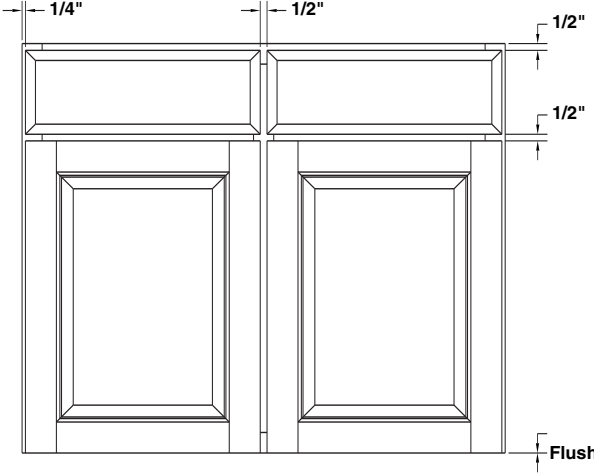
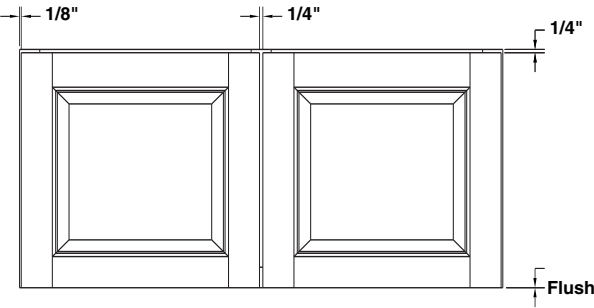
### 1/2" Overlay



### 1-1/4" Overlay



### 1-3/8" Overlay





## Pricing Procedure for Custom Doors and Drawer Fronts

The price for any custom door or drawer front can be easily calculated by inserting the relevant numbers into the chart below. A brief explanation and/or a page number for reference is given for each required number. An example is shown.

**Example — 1 CRP-10 with radius corners in Premium Hard Maple, 1" thick, 15"x 25"**  
 $(\$11.25 + \$2.60) + (\$12.95 \times 1.30 \times 1.35 \times 2.60) = \$72.94 \times 0.95 = \$69.29$



**CRP-10**  
\$11.25-B  
7-1/2" x 7-1/2"

**Design Charge**  
See CRP-10 door in Wood Doors & Drawer Fronts tabbed section under raised panel listing in the Custom Product Manual.

**Total Design Charge**

**Design Charges + Design Options**

### Design Options

Refer to Options on Offering and Availability chart and Design Options tabbed section in the Custom Product Manual.

**plus**

**Total Material Charge**

**Material Charge X One Inch Upcharge (30%) X Premium Material Upcharge (35%) X Square Footage**

### One Inch Upcharge (30% doors, 20% drawer fronts)

See Material Pricing Guide tab in Wood Doors & Drawer Fronts section in the Custom Product Manual. These optional charges will be incurred only if specifying 1" thick product rather than our standard 3/4" thickness.

### Material Charge

See Material Pricing Guide tab in Wood Doors & Drawer Fronts section in the Custom Product Manual. Prices are per sq. ft. Door minimum: 1 sq. ft. Drawer front minimum: none.

### Square Footage

Calculate the square footage of the item being ordered. Multiply the length by the width, in inches, and divide the result by 144.

**equals**

**Total List Price X**

**Cost Multiplier**

### Premium Material Upcharge (35%)

See Material Pricing Guide tab in Wood Doors & Drawer Fronts section. This optional 35% charge will be incurred only if specifying our Premium grade wood, rather than our Standard grade.

**equals**

**Total Charge after discount**

### Cost Multiplier

One minus trade discount percentage.

Species	Premium Grade Availability	Standard Grade Pricing			
		A	B	C	D (Drawer Fronts)
Ash, White		5.45	7.45	9.25	-4%
Birch, Red		9.00	12.40	16.50	+15%
Birch, White		7.25			
Cherry		8.55			
Lenga <sup>1</sup>					
Mahogany					
Maple, Hard					

## Product Design Choices

All Conestoga's prices include choice of edge profile, framing bead and panel raise. However, Sophisticate and LC-Insert edge profiles incur an extra charge. For complete details on our options and associated prices, see Design Options section of the Custom Product Manual.

Before pricing a door or drawer front, verify the availability of the desired options on the design by referring to the Offering and Availability page found immediately after each door design page.

Multiple panel doors have design charges equivalent to the number of panels ordered. As an example, a CRP-10 with three panels uses the design charge of  $\$11.25 \times 3 = \$33.75$ . This policy excludes doors that come standard with multiple panels (i.e. CRP-10102). Due to construction complexity, all multiple panel mitered doors include an additional charge of \$39.00 per upright or middle rail plus the per-panel design charge.

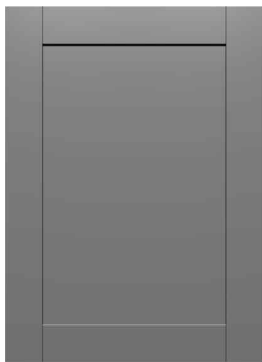


## Selected Custom Door Designs

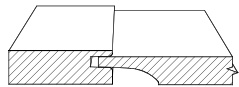
Conestoga's full range of custom door and drawer front designs, species, specifications, design options and specialty products are available to provide the versatility and individuality required by today's designers and consumers. See the Custom Product Manual for more information. Examples of selected products can be viewed on our website. Visit us at [www.conestogawood.com](http://www.conestogawood.com).

The following pages provide selected custom door and drawer front designs.

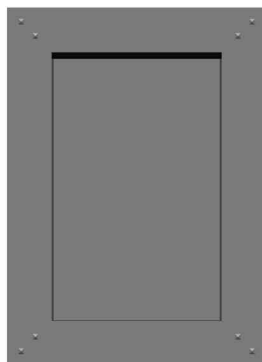
## Mortise & Tenon Door Designs



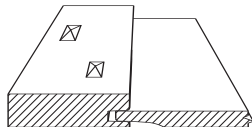
**Amesbury**  
matching drawer front available



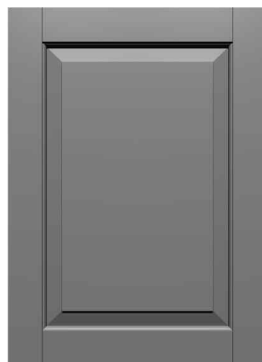
\$13.20-B  
7-1/2" x 7-1/2"  
Bead standard as shown  
5/8" reverse G-Cove raise shown



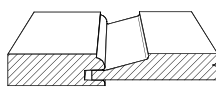
**Cottage**  
matching drawer front available



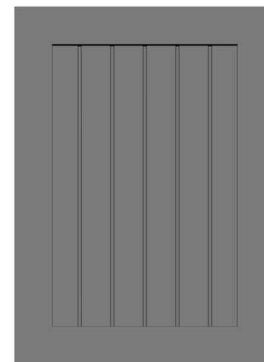
\$30.25-B  
7-5/8" x 7-5/8"  
2-3/4" framing  
3/8" reverse G-Cove raise shown  
Diagonal Walnut  
pyramid pegs standard  
Cottage door is *not* available  
with any finishing options  
Loose pegs are optional and  
must be specified



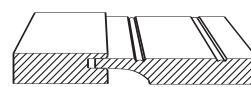
**CRP-10**  
matching drawer front available



\$11.25-B  
7-1/2" x 7-1/2"  
Slant raise shown



**Prestwick**  
matching drawer front available



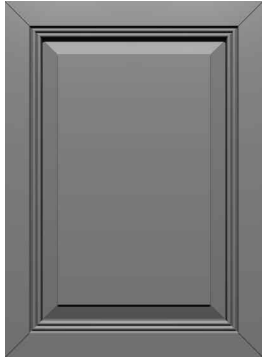
\$20.90-B  
7-1/2" x 7-1/2"  
5/8" reverse G-Cove raise shown  
G-012 rout with 2" spacing

Unless specified otherwise, framing width on all designs is 2-5/16" measured across the back of the framing. Profile cross section for reference only. Minimums listed are based on raise shown. Minimums will vary depending on the overlay and cabinet width selection.

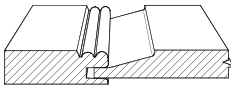
For specific information on available options, species, and restrictions refer to the appropriate sections in the Custom Product Manual.



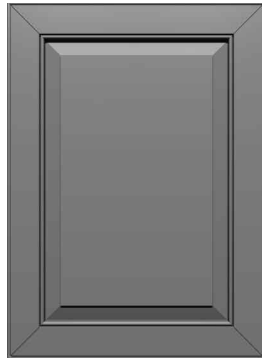
## Miter Door Designs



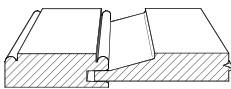
**CRP-10533**  
matching drawer front available



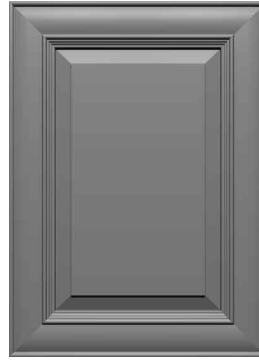
\$19.00-B  
7-1/2" x 7-1/2"  
Slant raise shown



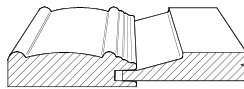
**CRP-10827**  
matching drawer front available



\$19.00-B  
7-1/2" x 7-1/2"  
Slant raise shown



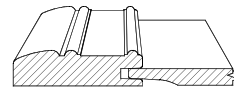
**CRP-10875**  
matching drawer front available



\$25.35-B  
8-5/8" x 8-5/8"  
2-7/8" framing  
Slant raise shown



**CRP-10946**  
matching drawer front available



\$25.35-B  
8" x 8"  
2-15/16" framing  
3/8" reverse G-cove raise shown

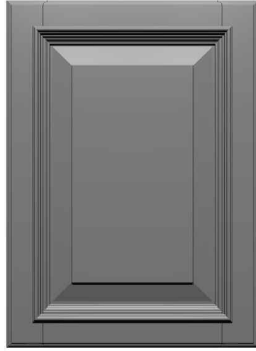
Unless specified otherwise, framing width on all designs is 2-5/16" measured across the back of the framing. Profile cross section for reference only. Minimums listed are based on raise shown. Minimums will vary depending on the overlay and cabinet width selection.

Due to construction complexity, all multiple panel miter doors include an additional charge of \$39.00 per middle and upright rail plus the per-panel design charge. Framing width on all designs is determined by measuring across the back of the framing. Minimums listed are based on panel raises shown. Minimums will vary depending on panel raise selection.

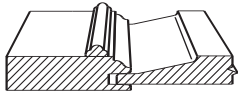
For specific information on available options, species, and restrictions refer to the appropriate sections in the Custom Product Manual.



## Applied Moulding Door Designs



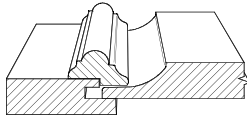
**Churchill**  
matching drawer front available



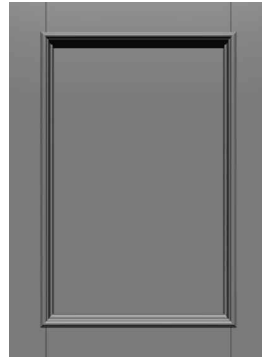
\$43.60-C  
8-7/8" x 8-7/8"  
2-3/4" framing  
P-008 raise shown



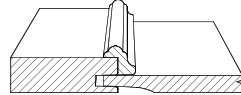
**CRP-10209**  
matching drawer front available



\$33.50-C  
7-1/2" x 7-1/2"  
1" G-Cove raise shown



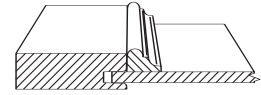
**CRP-10797**  
matching drawer front available



\$33.50-C  
6-3/4" x 6-3/4"  
3/8" Reverse G-cove  
raise shown



**Verona**  
matching drawer front available



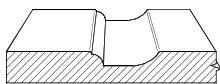
\$29.50-B  
7-1/4" x 7-1/4"  
1/4" Veneered panel

Unless specified otherwise, framing width on all designs is 2-5/16" measured across the back of the framing. Minimums listed are based on raise shown. Minimums will vary depending on panel raise selection.

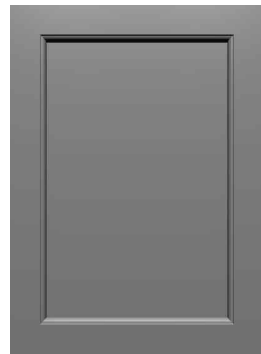
## MDF Door Designs



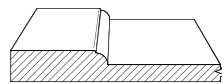
**10RC**



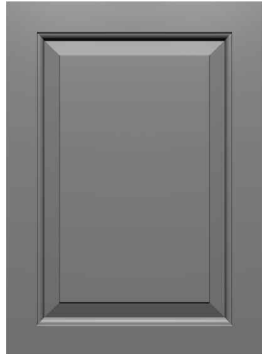
\$12.00-A  
7-5/8" x 7-5/8"  
Max: 42" x 63"



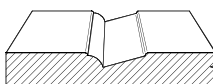
**10SQF1**



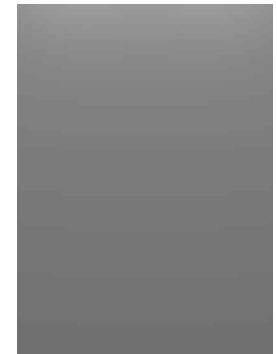
\$25.00-A  
7-5/8" x 7-5/8"  
Max: 42" x 63"



**10SQ2**



\$19.00-A  
7-1/2" x 7-1/2"  
Max: 42" x 63"  
(single panel only)



**Slab**



\$5.00-A  
1-1/4" x 6"  
Max: 42" x 96"

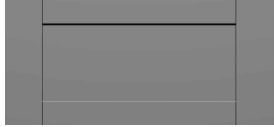
Minimum sizes listed are for single panel designs only. Multiple panel design maximum is 42" x 96". Above prices are design charges only for raw MDF product.

For specific information on available options, species, and restrictions refer to the appropriate sections in the Custom Product Manual.

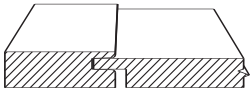




## Mortise & Tenon Drawer Designs



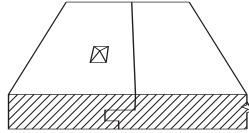
**Amesbury**



\$16.15-B  
6" x 4-1/4"  
1-1/2" rails  
2-5/16" stiles  
P-259 raise shown



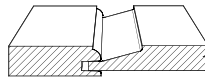
**Cottage I**



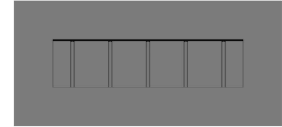
\$20.05-B  
Min. 7-1/2" x 2-3/4"  
Max. 48" x 14"  
Walnut pyramid peg in each stile  
2-3/4" stile – face  
Cottage I drawer is *not* available  
with any finishing options  
Loose pegs are optional and must  
be specified



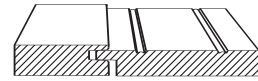
**CRP-10**



\$14.20-B  
7-1/2" x 5-7/8"  
1-1/2" rails  
2-5/16" stiles  
Slant raise shown



**Prestwick**



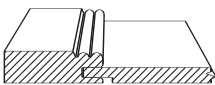
\$23.85-B  
7-1/8" x 4-1/4"  
2-5/16" stiles  
1-1/2" rails  
P-259 raise shown  
G-012 rout with 2" spacing

Drawer fronts have horizontal grain on panel as standard. Vertical grain available upon request.  
Minimums listed are based on raise shown. Minimums will vary depending on panel raise selection.

## Miter Drawer Designs



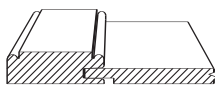
**CRP-10533**



\$20.10-B  
5-1/2" x 5-1/2"  
2-5/16" framing  
P-057 raise shown



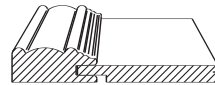
**CRP-10827**



\$20.10-B  
5-1/2" x 5-1/2"  
2-5/16" framing  
P-057 raise shown



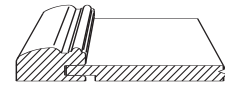
**CRP-10875**



\$23.75-B  
4-7/8" x 4-7/8"  
2" framing  
P-057 raise shown



**CRP-10946**



\$23.75-B  
4-1/8" x 4-1/8"  
1-5/8" framing  
P-057 raise shown

Drawer fronts have horizontal grain on panel as standard. Vertical grain available upon request.  
Minimums listed are based on raise shown. Minimums will vary depending on panel raise selection.

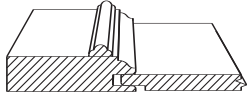
For specific information on available options, species, and restrictions refer to the appropriate sections in the Custom Product Manual.



## Applied Moulding Drawer Designs



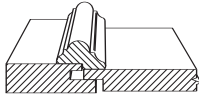
**Churchill**



\$43.60-C  
8" x 4-7/8"  
2" rails  
2-3/4" stiles  
P-057 raise shown



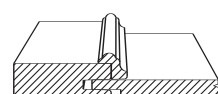
**CRP-10209**



\$28.25-C  
6-1/8" x 6-1/8"  
2-5/16" on back  
P-398 raise shown



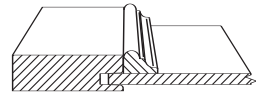
**CRP-10797**



\$28.25-C  
7-1/8" x 4"  
1-1/2" rails  
2-5/16" stiles  
P-057 raise shown



**Verona**



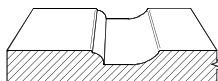
\$28.25-B  
7-1/4" x 5-5/8"  
1-1/2" rails  
2-5/16" stiles  
1/4" Veneered panel

Drawer fronts have horizontal grain on panel as standard. Vertical grain available upon request. Minimums listed are based on raise shown. Minimums will vary depending on panel raise selection.

## MDF Drawer Designs



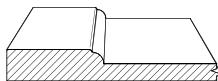
**10 RC**



\$12.00-A  
8-1/4" x 6"  
1-3/16" rails



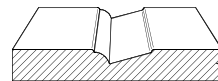
**SQF1**



\$25.00-A  
7-5/8" x 5"  
1-3/16" rails



**10 SQ2**



\$19.00-A  
7-7/8" x 5-3/4"  
1-1/4" rails



**Slab**



\$5.00-A  
RTF: 1-1/4" x 6"  
MDF: 1" x 1"

Above prices are design charges only for raw MDF product.

For specific information on available options, species, and restrictions refer to the appropriate sections in the Custom Product Manual.